

INDOOR-OUTDOOR

HARLEQUIN Sanderson







# HARLEQUIN

INDOOR-OUTDOOR





# HARLEQUIN

## INDOOR-OUTDOOR



### **CHOOSE A HARLEQUIN LOOK THAT REFLECTS WHO YOU ARE, BOTH INSIDE AND OUT.**

Over the last 18 months, we've enjoyed our precious homes like never before. Yards and porches have joined living rooms and kitchens to create one harmonious space, transformed into social settings, hosting long awaited time with friends.

This season, Harlequin is excited to announce the launch of its first ever range of indoor-outdoor fabrics. The collection of 10 bright, luxurious prints builds on Harlequin's ethos of empowering consumers to express their personality through design. Produced using eco-fast inks, each fabric is water and mildew resistant and with an excellent resistance to light, colours stay strong, even after the sunniest of days.

Harlequin's recent OWN THE ROOM campaign encouraged homeowners to choose their interior based on their personality. It connected spaces with people. No more making do. Now, the British interior design brand is taking its statement fabrics outside, as well as adding peace of mind to high traffic areas.

Coloured into four looks titled Rewild, Retreat, Reflect and Renew, each look enables the elevation of outdoor spaces with a choice of striking patterns, from angular geometrics to modern botanicals and Asian influences. Favourite designs can be layered for a maximalist aesthetic or used as standalone pieces. Whatever your style, Harlequin effortlessly creates a range of looks that represent who we are, both on the inside and out.

#### **REFLECT**

The perfect tonic to our fast-paced lives, this classic pairing shares a modern vibe. Across crisp white grounds, varied accents span from deep indigos to seaside blues, creating a look that's serene and dependable.

#### **RETREAT**

A tranquil palette of naturally elegant colour, Retreat is inspired by the warmth of sun kissed living. Packed with fresh acacia greens, deep turquoise and accents of coral, it shares an understated glamour and a peaceful, modern vibe.

#### **REWILD**

Vibrant designs, confident and uninhibited unleash their patterned indulgence. This glorious, bright pallet reminds us of cheerful holidays, brimming with life affirming energy. An infusion of deep greens, pomegranate reds and terracotta tones warm and refresh our minds.

#### **RENEW**

A collection of timeless designs in tastefully limited colour, this softly contrasting palette is inspired by sand, sea and sky. Pops of cool yellow remind us of striped beach umbrellas and relaxing summer days. This calming look is elegant and ethereal.





## KELAPA

Confident large-scale cheese plant leaves and stems create an all-over jacquard in a watercolour-style. A fashion-fix for alfresco dining.

Available in an Emerald/Zest colourway





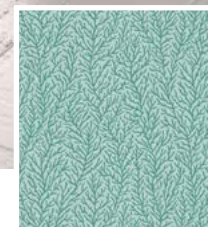
## ATOLL

Taking its name from the incredible ring-shaped coral reefs found in tropical waters, choose from a fresh marine palette or our new, contemporary pink and orange colour combination.

Available in two colourways: Sky and Nectar/Brazilian Rosewood



121048



121049





## ALVARO

Reminiscent of palm trees gently swaying in a soft, summer breeze, Alvaro is a lovely painterly design. A fresh, white ground contrasts beautifully with the subtle highlight tones of layered leaves, opening up a decorating story with the introduction of new colour.

Available in one colourway: Ink/Pebble/Sky





# ACROPORA

Venture into an underwater world of coral reefs and swaying plants in this vivid scene of glorious technicolour.

Available in a Brazilian Rosewood/Nectar/Tree Canopy colourway





# TRANSVERSE

Inky brush mark detail casts subtle shapes and shadows across the ground of this showstopping geometric fabric. Inspired by the angularity of architecture, use as a standalone piece or layer alongside other Harlequin designs.

Available in an Ink colourway







121055



121054



## SHENLONG

Depicting Chinese dragons and figures in vibrant warming shades of pomegranate, incense and nectar, Shenlong features a beautiful chinoiserie motif with an art deco feel.

Available in two colourways: Celestial/Ink and Pomegranate/Grounded/Incense





## AMUR

Make a statement with our take on an animal print. This versatile, mid-scale fabric is perfect as a co-ordinate or featured design.

Available in a Celestial/Ink colourway







## EDO

Traditional Japanese buildings nestle among beautiful swaying willow trees in this simple tonal design.

Available in an Ink/Ivory colourway





# ANKARA

A complementary one colour tribal trellis and a key coordinator, this design sits across our entire outdoor range.

Available in three colourways: Nectar, Zest and Emerald



121058



121059



121060





## PAPILIO

This flutter of painted butterflies is arranged in a neat formation of zesty colours. Perfectly suited to rooms with a garden view.

Available in a Flamingo/Papaya/Loganberry colourway





# FABRIC INDEX

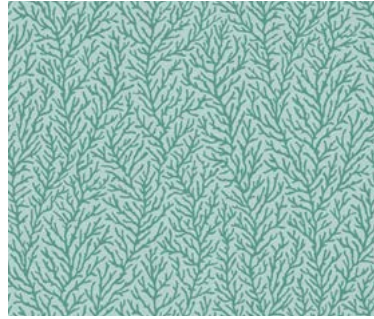
---



KELAPA | 121047



ATOLL | 121048



ATOLL | 121049



ALVARO | 121050



EDO | 121057



ACROPORA | 121052



TRANSVERSE | 121053



SHENLONG | 121054



SHENLONG | 121055



AMUR | 121056



ANKARA | 121058



ANKARA | 121059



ANKARA | 121060



PAPILIO | 121051







# Sanderson

## INDOOR-OUTDOOR

### SANDERSON LAUNCHES A STYLISH RANGE OF INDOOR - OUTDOOR FABRICS

Sanderson is proud to present its exciting new collection of innovative indoor-outdoor fabrics. Launching AW/21 and featuring 10 iconic designs in a choice of four classic colour palettes, it's the perfect way to create a transitional look with a timeless British aesthetic.

From yards to porches and poolsides to picnics, Sanderson's signature style works effortlessly across sofas and sun loungers. Countryside influences sit alongside exquisitely hand drawn flora and fauna to create a welcoming sanctuary, that looks equally at home indoors and out.

Produced using eco fast inks, the range's fabrics are stain and mildew resistant, making them practical as well as stylish. With an excellent light fastness, colours remain bright, even under the strongest of sun-drenched days.

#### DEEP SEA BLUES

Featuring indigo hues and deep sea blues printed on crisp white grounds, this serene palette represents modern coastal living.

#### THE GARDEN

This garden is full of fresh acacia greens, deep turquoises and accents of coral. Accurately drawn botanical motifs seamlessly connects indoors and out.

#### BEAUTIFUL & BRIGHT

Beautiful and bright, this pallet reminds us of cheerful holidays. Iconic designs in vibrant colours pair with warmer earthy tones and cooler fresh blues.

#### SAND, SEA & SKY

Softly coloured taupe greys and powder blues are inspired by sand, sea and sky. Highlights of muted yellow reminiscent of striped beach umbrellas chart leisurely summer days and nautical adventures.







## WOODLAND FERNS

Hand drawn in pen and ink, detailed ferns are set against a crisp white ground to create this stunning and accurately coloured indoor-outdoor fabric.

Available in Botanical Green





# LORIINI

A statemental chinoiserie created specifically for outdoor living, Loriini is a beautiful archive design with charming bird detail perched upon stylised botanical branches.

Available in a Botanical Green colourway







226932



226934

## MAURITIUS

We love this bountiful fabric with its smart white ground. Adapted from an early 19th century French design and originally painted in watercolour, it's beautifully spaced and wonderfully versatile.

Available in two colourways: Chine Blue and Ivory/Multi



BEAUTIFUL & BRIGHT



# JACKFRUIT

The jackfruit has an intriguing history, having been one of the main causes of the 'mutiny on the Bounty' in 1789.

The stylised lime green fruit in this stunning design is surrounded with intricate botanical detail and creates a real statement.

Available in Botanical Green







## NEWHAM COURTNEY

Inspired by a 19th century wallpaper document in our archive, Sanderson designer Jeni Morris created Newnham Courtney in 1989. Recoloured and reprinted on a white ground, a glorious array of blues makes this hugely versatile fabric easy to use.

Available in Indigo



DEEP SEA BLUES



# MANILA

Manila is a stylish layering of tropical palms and elegant ferns in a classic French Blue.

Available in French Blue



DEEP SEA BLUES





226929



226930

## ROSE AND PEONY

One of Sanderson's most iconic designs, abundant blooms create an elegant feature. Choose from the classic tones of China blue or the joyous brights of cerise, mixed with fresh greens and sprinkled with highlight blues.

Available in two colourways: Cerise and China Blue



BEAUTIFUL & BRIGHT



# WOODLAND CHORUS

This realistic depiction of our favourite British birds was inspired by an 18th century painting of plants and animals.

A pair of nesting blue tits make their home alongside wrens, robins, green woodpeckers and thrushes in this modern tree of life. To complete the scene, woodland berries are joined by charming butterflies, insects and ladybirds, all painted in exquisite watercolour detail.

Available in a Sky Blue / Multi colourway







## CALATHEA

Originating in Brazil, the Calathea or 'Prayer Plant' was a favourite for illustration in the late 19th century due to its remarkable decorative foliage. Designed to grow as two striping columns across the width of the cloth, its leaf is finely painted in botanical greens on a white ground.

Available in Botanical Green





# CAPUCHINS

A beautifully spacious fabric showing detailed etchings of charming capuchins and botanical studies. Blooming amaryllis flowers, plump pomegranate pips and perching parrots capture the nuances of the design's tone work.

Available in a Multi colourway



BEAUTIFUL & BRIGHT



# FABRIC INDEX



WOODLAND FERNS | 226927



LORIINI | 226928



ROSE AND PEONY | 226929



ROSE AND PEONY | 226930



MANILA | 226931



MAURITIUS | 226932



MAURITIUS | 226934



JACK FRUIT | 226935



NEWHAM COURTNEY  
226936



WOODLAND CHORUS  
226937



CALATHEA | 226943



CAPUCHINS | 226944





## DIGITAL DESIGN BOOK CONTACT INFORMATION

---

### **SANDERSON DESIGN GROUP**

#### **HEAD OFFICE**

Chalfont House  
Oxford Road  
Denham  
UB9 4DX  
Tel: + 44 (0) 20 3457 5862

#### **SANDERSON DESIGN GROUP USA OFFICE**

800 Huyler Street  
Teterboro  
New Jersey 07608  
Tel: +1 800 894 6185

#### **For further information:**

[Sanderson.sandersondesigngroup.com](http://Sanderson.sandersondesigngroup.com) and [Harlequin.sandersondesigngroup.com](http://Harlequin.sandersondesigngroup.com)

#### **NEW YORK SHOWROOM**

D&D Building, 979 3rd Avenue, Suite 409, New York, 10022  
Tel: +1 800 395 8760  
Email: [sales-ny@zoffany.com](mailto:sales-ny@zoffany.com)

#### **CHICAGO SHOWROOM**

222 Merchandise Mart Plaza, Suite 6-117, Chicago 60654  
Tel: +1 312 929 2058  
Email: [sales-chicago@sandersondesigngroup.com](mailto:sales-chicago@sandersondesigngroup.com)